

Flowshield Quartz (2 mm)



Description

Smooth, glossy, self smoothing resin floor finish with a decorative speckled finish. Ideal for a minimalist, modern, contemporary environment. Surprise your customers with your creativity - use Flowshield Quartz to make a statement.

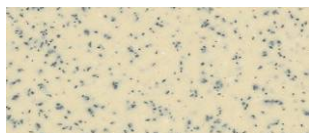
Uses

Ideal for areas with intensive traffic such as shops, department stores, restaurants, garden centres, garages and airports.

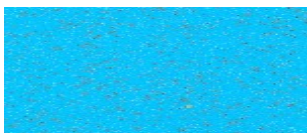
Benefits

- Attractive and colourful floor finish.
- Easy to clean and maintain.
- Hard wearing.
- Environmentally friendly (no dust).
- High chemical resistance.

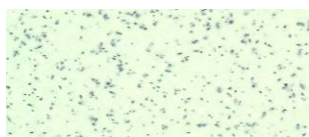
Standard colour chart



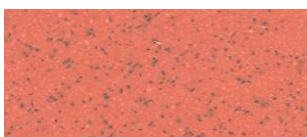
Beige 326



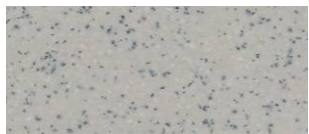
Marine Blue 478



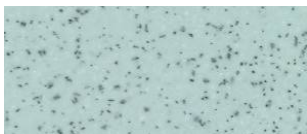
Mint Green 759



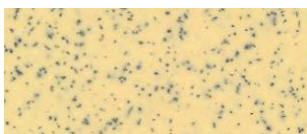
Salmon Pink 650



Goosewing Grey 222



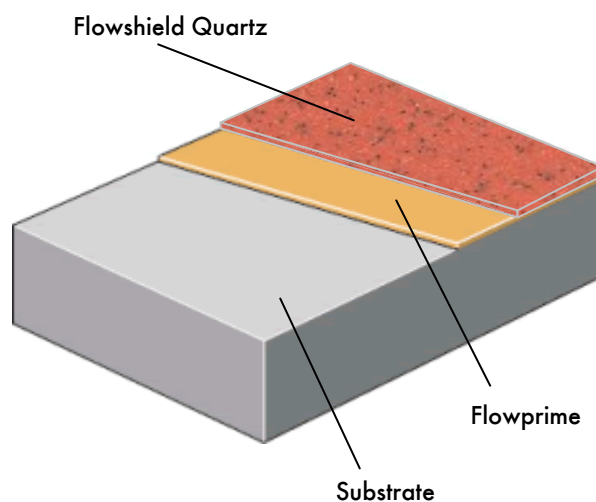
Sky Blue 452



Vanilla Yellow 359

The applied colours may differ slightly from the examples shown above. Contact our customer services for a true colour sample or a special colour match. Special corporate colours and designs can be produced to special order.

System Design



Model Specification

Product: Flowshield Quartz

Finish: Gloss

Thickness: 2 mm

Colour: _____

Preparatory work and application in accordance with suppliers instructions.

Supplier: Flowcrete UK Ltd

Telephone: Customer Service +44 (0) 1270 753000

Substrate Requirements

Concrete or screed substrate should be a minimum of 25N/mm², free from laitance, dust and other contamination. The substrate should be dry to 75% RH as per BS 8204 and free from rising damp and ground water pressure. If no damp proof membrane is present Hydraseal DPM can be incorporated directly beneath the Flowshield Quartz system.

Products Included in this System

Primer: Flowprime @ 0.25 kg/m²

Topping: Flowshield Quartz @ 3.0 kg/m² (2 mm)

Assumes surface profile of SR1: 3 mm high standard.

Detailed application instructions are available upon request.

Installation Service

The installation should be carried out by a Flowcrete approved contractor with a documented quality assurance scheme. Obtain details of our approved contractors by contacting our customer service team or enquiring via our web site www.flowcrete.co.uk.

Note

No resin system is totally colour fast and may change colour over time (exhibits a yellowing effect). Colour change depends on the UV light and heat levels present and hence the rate of change cannot be predicted. This is more noticeable in very light colours but does not compromise the product's physical or chemical resistance characteristics. We have endeavoured to adopt colours within our standard range which minimise this change.

Intensively coloured products (e.g. hair colorants, medical disinfectants etc.) and plasticizer migration (e.g. from rubber tyres) can lead to irreversible discoloration in the surface. Please contact our Technical Services Department for further advice.

Environmental considerations

The finished system is assessed as non-hazardous to health and the environment. The long service life and seamless surface reduce the need for repairs, maintenance and cleaning. Environmental and health considerations are controlled during manufacture and application of the products by Flowcrete staff and fully trained and experienced contractors.

Focus on the Floorzone

Flowcrete are market leaders in specialist industrial and commercial flooring. Systems available include: underfloor heating systems, floor screeds, surface damp proof membranes, decorative floor finishes, seamless terrazzo, car park deck waterproofing and corrosion protection systems. Our objective is to satisfy your Floorzone needs.

Technical Information

The figures that follow are typical properties achieved in laboratory tests at 20°C and at 50% Relative Humidity.

Reaction to fire	E _{FL} - s2	EN 13501-1
Wear Resistance	Max. wear depth <50µm	EN 13892-4
Bond Strength	>3.0 N/mm ²	EN 13892-8
Impact Resistance	20 Nm	EN ISO 6272
Temperature Resistance	Tolerant of sustained temperatures up to 50°C	
Water Permeability	Nil - Karsten test (impermeable)	
Chemical Resistance	Contact Technical Department	
Toxicity (when cured)	Taint free to sensitive foodstuffs.	
Compressive Strength	55 N/mm ² (BS 6319)	
Flexural Strength	23 N/mm ² (BS 6319)	
Tensile Strength	13 N/mm ² (BS 6319)	
Slip Resistance	Dry >40 low slip potential	
Method described in BS 7976-2	(in accordance with HSE and UKSRG guidelines)	
(typical values for 4-S rubber slider)		

The slipperiness of flooring materials can change significantly, due to the installation process, after short periods of use, due to inappropriate maintenance, longer-term wear and/ or surface contaminants (wet or dry).

Textured systems are recommended to meet slip resistance value requirements for wet conditions and/ or surface contaminants (wet or dry) - please contact our Technical Advisors for further details and specifications.

Complies with BS 8204-6/FeRFA type 5.

Speed of Cure

	10 °C	20 °C	30 °C
Light traffic	24 hrs	12 hrs	6 hrs
Full traffic	72 hrs	48 hrs	24 hrs
Full chemical cure	12 days	7 days	7 days

Aftercare - Cleaning and Maintenance

Clean regularly using a single or double headed rotary scrubber drier in conjunction with a mildly alkaline detergent.

Important Notes

Flowcrete's products are guaranteed against defective materials and manufacture and are sold subject to its standard Terms and Conditions of Sale, copies of which can be obtained on request.

Any suggested practices or installation specifications for the composite floor or wall system (as opposed to individual product performance specifications) included in this communication (or any other) from Flowcrete UK Ltd constitute potential options only and do not constitute nor replace professional advice in such regard. Flowcrete UK Ltd recommends any customer seek independent advice from a qualified consultant prior to reaching any decision on design, installation or otherwise.