

Flowfresh ESD HF



Description

Flowfresh ESD HF is a 6 – 9 mm heavy duty, chemical resistant antimicrobial treated antistatic polyurethane resin floor screed. Attractive fine textured coloured floor finish with a speckled effect on the surface.

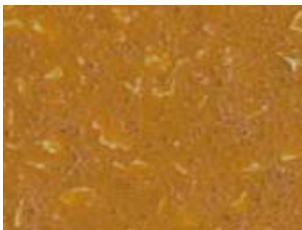
Uses

To provide an antistatic heavy duty, thermal shock resistant, hard wearing floor finish with exceptional chemical resistance. Typical areas for use are wet and dry process areas where the floor is subjected to heavy traffic, impact and chemical attack.

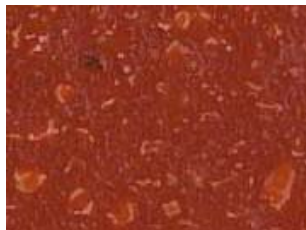
Benefits

- Antistatic to EN IEC 61340
- Contains Polygiene, an antimicrobial additive based on silver ion technology
- Very high chemical resistance
- Easy to clean and sterilise anti-slip surface, minimal joints
- Steam cleanable
- Non tainting, non dusting
- High abrasion resistance
- Withstands high mechanical stress
- Good alternative to expensive acid resistant tiles
- Low odour during application
- Positive slip resistance

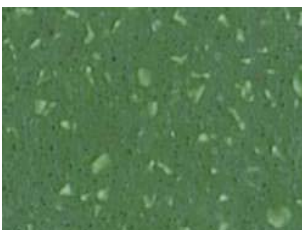
Standard colour chart



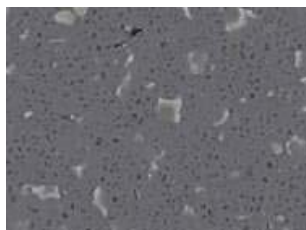
Mustard



Red



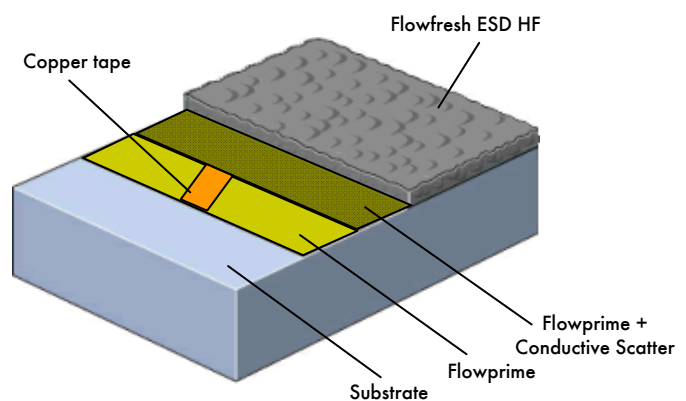
Dark Green



Mid Grey

The applied colours may differ slightly from the examples shown above. Contact our customer services for a true colour sample or a special colour match. Special corporate colours and designs can be produced to special order.

System Design



Model Specification

Product: Flowfresh ESD HF
Finish: Matt
Thickness: _____mm (8 mm)
Colour: _____

Preparatory work and application in accordance with suppliers instructions. Supplier: Flowcrete UK Ltd
Telephone : Customer Service - +44 (0)1270 753000

Substrate Requirements

Concrete or screed substrate should be a minimum of 25N/mm², free from laitance, dust and other contamination. The substrate should be dry to 75% RH as per BS 8204 and free from rising damp and ground water pressure. If no damp proof membrane is present, Hydraseal DPM can be incorporated directly beneath the Flowfresh ESD HF system.

Products Included in this System

Primer: Flowprime @ 0.25 kg/m²
Conductive Grid of 10 mm wide copper tape.
Primer: Flowprime @ 0.25 kg/m²
Scatter: Conductive Grade 30 @ approx. 2 kg/m²
Test electrical resistance when primer cured.
Topping: Flowfresh ESD HF (Density 2.1 kg/l)
@ 16.8 kg/m² for 8 mm

Flowfresh ESD HF is a self-sealing finish.

Detailed application instructions are available upon request.

Installation Service

The installation should be carried out by a Flowcrete approved contractor with a documented quality assurance scheme. Obtain details of our approved contractors by contacting our customer service team or enquiring via our web site www.flowcrete.co.uk

Microbial / Fungal Resistance

The Polygiene antimicrobial additive incorporated into Flowfresh ESD HF provides control of most bacteria and fungi which come into contact with the floor.

Antimicrobial Active substance: Silver biocide
Tested: ISO 22196/JIS Z2801.

Environmental considerations

The finished system is assessed as non-hazardous to health and the environment. The long service life and seamless surface reduce the need for repairs, maintenance and cleaning. Environmental and health considerations are controlled during manufacture and application of the products by Flowcrete staff and fully trained and experienced contractors.

Note

No resin system is totally colour fast and may change colour over time (exhibits a yellowing effect). Colour change depends on the UV light and heat levels present and hence the rate of change cannot be predicted. This is more noticeable in very light colours but does not compromise the product's physical or chemical resistance characteristics. We have endeavoured to adopt colours within our standard range which minimise this change.

Intensively coloured products (e.g. hair colorants, medical disinfectants etc.) and plasticizer migration (e.g. from rubber tyres) can lead to irreversible discoloration in the surface. Please contact our Technical Services Department for further advice.

Technical Information

The figures that follow are typical properties achieved in laboratory tests at 20 °C and at 50% Relative Humidity.

Electrical Resistance (EN IEC 61340-5-1)	5 x 10 ⁴ – 1 x 10 ⁹ Ohms
Fire Resistance (EN 13501-1)	BFL - s1
Slip Resistance Method described in BS 7976-2 (typical values for 4-S rubber slider)	Dry >40 low slip potential (in accordance with HSE and UKSRG guidelines)
The slipperiness of flooring materials can change significantly, due to the installation process, after short periods of use, due to inappropriate maintenance, longer-term wear and/ or surface contaminants (wet or dry).	
Textured systems are recommended to meet slip resistance value requirements for wet conditions and/ or surface contaminants (wet or dry) - please contact our Technical Advisors for further details and specifications.	
Impact Resistance	BS 8204-1 Cat: A (<0.5mm) ISO6272 1 kg weight >1.8m 2 kg weight >1.5 m
Temperature Resistance	Tolerant up to 120 °C intermittent spillages or constant 105 °C dry heat (at 9mm thickness)
Water Permeability	Nil – Karsten test (impermeable)
Chemical Resistance	Contact Technical Department Excellent resistance to sugars and most acids (organic and inorganic)
Abrasion Resistance	ASTM D4060 Taber Abrader: 25mg loss per 1000 cycles (1kg load using H22 wheels) BS 8204-2: Class AR2
Compressive Strength	> 50 N/mm ² (BS 6319)
Flexural Strength	20 N/mm ² (BS 6319)
Tensile Strength	10 N/mm ² (BS 6319)
Bond Strength	Greater than cohesive strength of 25 N/mm ² concrete. > 1.5 MPa.

Complies with BS 8204-6/FeRFA type 8.

Speed of Cure

	10 °C	20 °C	30 °C
Light traffic	36 hrs	24 hrs	12 hrs
Full traffic	72 hrs	48 hrs	24 hrs
Full chemical cure	10 days	7 days	5 days

Aftercare - Cleaning and Maintenance

Clean regularly using a single or double headed rotary scrubber drier in conjunction with a mildly alkaline detergent.

Important Notes

Flowcrete's products are guaranteed against defective materials and manufacture and are sold subject to its standard Terms and Conditions of Sale, copies of which can be obtained on request.

Any suggested practices or installation specifications for the composite floor or wall system (as opposed to individual product performance specifications) included in this communication (or any other) from Flowcrete UK Ltd constitute potential options only and do not constitute nor replace professional advice in such regard. Flowcrete UK Ltd recommends any customer seek independent advice from a qualified consultant prior to reaching any decision on design, installation or otherwise.