

Isocrete Acoustic K



Description

An acoustic separating floor system for use with a precast concrete floor slab with a 50 mm Isocrete K-Screed separated by a 9 mm resilient layer with junctions formed using a prefabricated edge strip.

Uses

For new build or refurbishment of separating floors in domestic properties and other buildings where resistance to the passage of sound is required.

Benefits

- Complies with Building Regulations
- Reduced screed thickness
- Laid only by approved Licensees
- Early installation of sensitive finishes
- High strength and resistance to construction traffic.
- K-Screed is approved by British Board of Agrément

Isocrete Acoustic K Flanking Strip

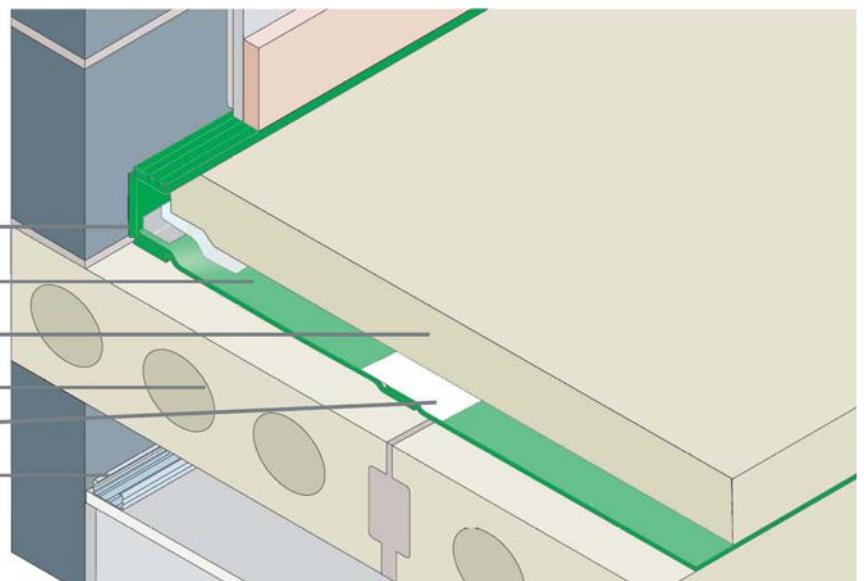
9mm Isocrete Acoustic K Foam

50mm Isocrete K Screed reinforced with Isocrete PP Fibres

150mm precast concrete slab

Isocrete Acoustic K Tape

Metal ceiling system with 8kg/m² plasterboard and 100 mm void.



Model Specifications

Product: Acoustic K
 Preparatory work and application in accordance with manufacturer's instructions.
 Manufacturer: Flowcrete UK Ltd

Acoustic K

A precast concrete floor slab with a 50mm Isocrete K-Screed separated by a 9mm resilient layer with junctions formed using a prefabricated edge strip. A ceiling of 8kg/m² plasterboard fixed to a metal frame system with a minimum 100 mm void.

Precast concrete hollow core slab 150mm thick (minimum mass of 300 kg/m²). Joints between planks filled with sand cement mix grout.

Resilient layer under screed of 9mm Isocrete Acoustic K Foam with joints overlapped by 50mm and taped with Isocrete Acoustic K Tape.

Junctions with walls formed using Isocrete Acoustic K Flanking Strip.

A 50mm Isocrete K-screed reinforced with Isocrete PP fibres.

Installation Service

The installation should be carried out by a Flowcrete licensee with a documented quality assurance scheme. Obtain details of our licensed contractors by contacting our customer service team or enquiring on our website www.flowcrete.co.uk

Environmental considerations

The complete system is assessed as non-hazardous to health and the environment. Environmental and health considerations are controlled during manufacture and application of the products by Flowcrete staff and fully trained and experienced contractors.

The sound proofing provides a more aesthetically acceptable environment.

	Acoustic K Foam	K Screed
BBA		✓
Sound Tests	✓	✓
Licensed Installer	✓	✓
Supplied by Flowcrete	✓	✓
Moisture Resistance	✓	✓
Warranty	✓	✓
Part E	✓	✓

Technical Information

Test Details

Test Organisation :-
 Sound Research Laboratories Ltd

Test Method

BS EN ISO 140-3: 1995-TP15 and
 BS EN ISO 140-6: 1998-TP12

Results Interpretation

BS EN ISO 717-1:1997 and BS EN ISO 717-2

The test results achieved exceed the requirements of Approved Document E of the Building Regulations 2003 which requires :-
 Airborne Sound performance minimum 45dB and
 Impact Sound performance maximum 62dB.

K Screed details

The figures that follow are typical properties achieved in laboratory tests at 20°C and at 50% Relative Humidity.

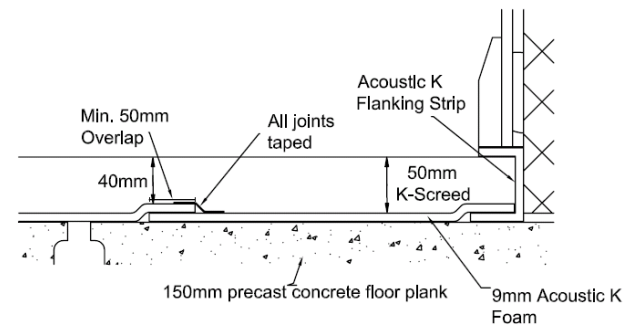
Density (approx.)	1,800 - 2,000 kg/m ³
BRE Test Category	Category A
BS8204-1	
Compressive Strength	>25 N/mm ² Standard K-Screed
(28 days) BS EN 196-1	>30 N/mm ² Heavy Duty K-Screed

Speed of Cure, K Screed

	10 °C	20 °C
Working time	2 - 3 hrs	2 hrs
Light foot traffic	48 hrs	24 hrs
Full traffic	7 days	7 days
Curing under polythene	7 days	7 days

Drying time to receive finishes (BS8203) 1 week per 25mm in good drying conditions (20°C, 50% RH, good ventilation) from removal of the curing polythene sheet.

FloorZone - Through Section



Important Notes

Flowcrete's products are guaranteed against defective materials and manufacture and are sold subject to its standard Terms and Conditions of Sale, copies of which can be obtained on request.

Any suggested practices or installation specifications for the composite floor or wall system (as opposed to individual product performance specifications) included in this communication (or any other) from Flowcrete UK Ltd constitute potential options only and do not constitute nor replace professional advice in such regard. Flowcrete UK Ltd recommends any customer seek independent advice from a qualified consultant prior to reaching any decision on design, installation or otherwise.