

Flowfast Quartz Classic for Wet Areas (5 mm)

A hard wearing, decorative resin floor topping made up of colour stable quartz granules encapsulated in a clear acrylic resin binder.



Rapid Installation:

MMA catalyst speeds up cure time, reducing construction schedules.



Slip Resistant:

Impressive anti slip profile in dry and wet conditions.



Hard Wearing:

Withstands impact, a variety of traffic conditions and UV exposure.

Commercial



Beige 101



Biscuit 102



Black 901



Dark Grey 703



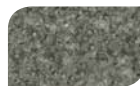
Grass Green
601



Light Grey 701



Mid Blue 501



Mid Grey 702

Industrial



Blue 502



Cream 103



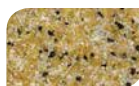
Green 602



Grey 704



Red 301



Yellow 104

The applied colours may differ from the examples shown.
For a full colour chart and samples, contact your local Flowcrete office.



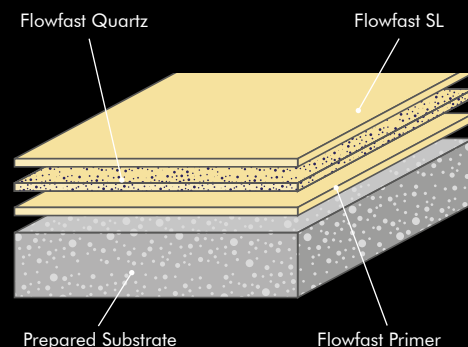
Technical Profile*

REACTION TO FIRE	
EN 13501-1	B _f -s1
IMPACT RESISTANCE	
EN ISO 6272	10 Nm
TEMPERATURE RESISTANCE	
Tolerant of sustained temperatures up to 70°C	
WEAR RESISTANCE	
EN 13892-4	Max wear depth <50 µm
COMPRESSIVE STRENGTH	
EN 13892-2	60 N/mm ²
FLEXURAL STRENGTH	
EN 13892-2	20 N/mm ²
TENSILE STRENGTH	
BS 6319-7	15 N/mm ²
BOND STRENGTH	
EN 13892-8	>2.5 N/mm ²
SLIP RESISTANCE** (in accordance with HSE and UKSRG guidelines)	
EN 13036-4 / BS 7976-2 (Typical values for 4-S rubber slider)	Dry >40 low slip potential Wet >40 low slip potential
BS 8204-6 / FeRFA	
Type 6	
SPEED OF CURE***	
Walk on	1 hr
Full Traffic & Chemical Cure	2-3 hrs

*These figures are typical properties achieved in laboratory tests at 20°C and at 50% Relative Humidity.

**The slipperiness of flooring materials can change significantly due to the installation process, after short periods of use, due to inappropriate maintenance, longer-term wear and/or surface contaminants (wet or dry). Textured systems are recommended to meet slip resistance value requirements for wet conditions and/or surface contaminants (wet or dry). Please contact our Technical Department for further details and specifications.

***Cure at temperatures in the range 0°C to +30°C can be achieved by altering the quantity of catalyst used. For applications below 0°C, please consult Technical Department.



Model Specification

Product	Flowfast Quartz Classic for Wet Areas
Finish	Satin

Preparatory work and application in accordance with manufacturer's instructions.

Products Included in This System

Primer	Flowfast Primer @ 0.3-0.5 kg/m ²
Scatter	Coloured Quartz size 7/8 @ 0.3 kg/m ²
Topping	Mix 1 part weight Flowfast Binder to approx 3.3 parts of Coloured Quartz, size 7/8 Apply the topping @ 8 kg/m ² (For 5 mm)
Scatter	Coloured Quartz size 8 @ 2.0 kg/m ²
Sealer	Flowfast Sealer @ 0.6 kg/m ² (Total for two coats)

Detailed application instructions are available upon request.

Substrate Requirements

Concrete or screed substrate should be a minimum of 25N/mm², free from laitance, dust and other contamination. The substrate should be dry to 95% RH as per BS8203 and free from rising damp and ground water pressure. Flowfast Damp Primer can be used for substrates up to 100% RH (surface dry).

Installation Service

The installation should be carried out by a Flowcrete approved contractor with a documented quality assurance scheme. Obtain details of our approved contractors by contacting our customer service team or enquiring via our website www.flowcrete.co.uk

Aftercare

Clean regularly using a single or double headed rotary scrubber drier in conjunction with a mildly alkaline detergent.

Environmental considerations

The finished system is assessed as non-hazardous to health and the environment. The long service life and seamless surface reduce the need for repairs, maintenance and cleaning. Environmental and health considerations are controlled during manufacture and application of the products by Flowcrete staff and fully trained and experienced contractors.

Notes

No resin system is totally colour fast and may change colour over time (exhibits a yellowing effect). Colour change depends on the UV light and heat levels present and hence the rate of change cannot be predicted. This is more noticeable in very light colours but does not compromise the product's physical or chemical resistance characteristics. We have endeavoured to adopt colours within our standard range which minimise this change. Intensively coloured products (e.g. hair colourants, medical disinfectants etc.) and plasticizer migration (e.g. from rubber tyres) can lead to irreversible discolouration in the sealer.

Please contact our Technical Services Department for further advice.

Flowcrete's products are guaranteed against defective materials and manufacture and are sold subject to its standard Terms and Conditions of Sale, copies of which can be obtained on request. Any suggested practices or installation specifications for the composite floor or wall system (as opposed to individual product performance specifications) included in this communication (or any other) from Flowcrete UK Ltd constitute potential options only and do not constitute nor replace professional advice in such regard. Flowcrete UK Ltd recommends any customer seek independent advice from a qualified consultant prior to reaching any decision on design, installation or otherwise.

System Datasheet written for Flowcrete UK Ltd. Please consult Technical Team in your own country region for specific details. [05/12/18, 01 UK]