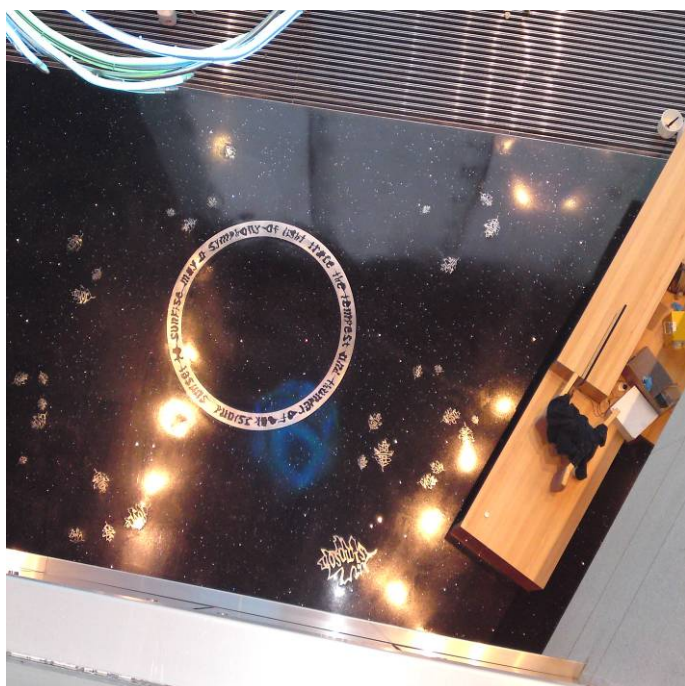


Mondéco Mirrazzo (6 - 7 mm nominal)



Description

Mirrazzo is a seamless epoxy resin terrazzo floor finish that utilises a blend of recycled crushed clear, coloured and mirror glass & metallic particles.

Uses

Mirrazzo seamless terrazzo is suitable for airport and railway terminals, shopping centres, restaurants, hotels and environments where design aesthetics and durability are of paramount concern.

Changing the colour of the resin matrix with the same aggregate blend can create a totally different effect.

Benefits

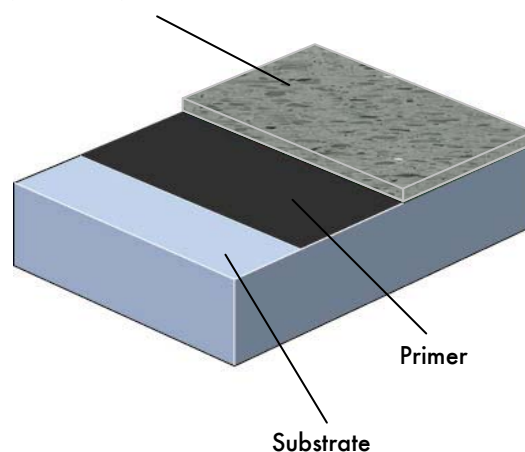
- Aesthetically pleasing - enhances the working environment
- Seamless finish (except for underlying slab joints)
- Easy to clean and maintain
- Abrasion resistant
- More than 50% recycled material

Project References

Basement Bar & Restaurant, Belfast;
Grand Canal Hotel, Dublin;
Garda Headquarters, Dublin;
Altnagelvin Hospital, Derry, Co. Londonderry.

System Design

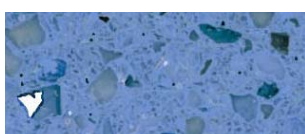
Mondéco Mirrazzo



Standard colour chart



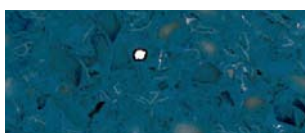
Botticino



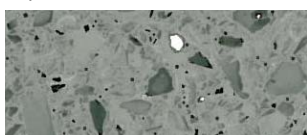
Sapphire



Nephrite



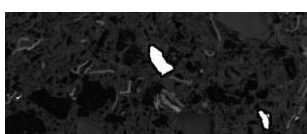
Sodalite



Pearl Grey



Bardiglio



Haematite



Black Diamond

The applied colours may differ slightly from the examples shown above. Contact our customer services for a true colour sample or a special colour match. Special corporate colours and designs can be produced to special order.

Model Specification

Product: Mirrazzo

Finish: Satin

Thickness: 6 - 7 mm nominal (8 mm ground down to 6 - 7 mm)

Colour: _____

Preparatory work and application in accordance with manufacturers instructions.

Manufacturer: Flowcrete UK Ltd

Telephone: Customer Service - +44 (0) 1270 753000

Substrate Requirements

Concrete or screed substrate should be a minimum of 25 N/mm², free from laitance, dust and other contamination. The substrate should be dry to 75% RH as per BS8204 and free from rising damp and ground water pressure. If no damp proof membrane is present Hydraseal DPM can be incorporated directly beneath the Mirrazzo system.

Products Included in this System

Primer: Peran STC @ 0.25 kg/m²

Topping: Mirrazzo @ 18.0 kg/m²
(Applied at 8 mm, ground down to 6 - 7 mm)

Grout Stage 1: TZ Pre-Treatment @ 0.06 kg/m² approx.

Grout Stage 2: Mondéco/Mirrazzo Grout @ up to 0.2 kg/m²
Applied in 1 or 2 layers

Sealers: Flowseal PU Gloss (WB) @ 0.03 kg/m² approx.

Dilute the pre-mixed product 1:1 by weight with clean water to ensure the correct application viscosity.

Enhance @ 0.03 - 0.04 litres/m² in total
(applied in 3 layers)

Additional layers may be applied to achieve the desired finish.

Detailed application instructions are available upon request.

Installation Service

The installation must be carried out by a Flowcrete approved contractor with a documented quality assurance scheme. Obtain details of our approved contractors by contacting our customer service team or enquiring via our web site www.flowcrete.co.uk.

Note

Mondéco/Mirrazzo is not totally colour fast and may change colour over time (exhibits a yellowing effect). Colour change depends on the UV light and heat levels present and hence the rate of change cannot be predicted. This is more noticeable in very light colours but does not compromise the product's flexibility or chemical resistance characteristics. We have endeavoured to adopt colours within our standard range which minimise this change. Separate each adjacent application bay (a day's lay) by a trim and ensure that single batch components are used within each bay.

Intensively coloured products (e.g. hair colorants, medical disinfectants etc.) and plasticizer migration (e.g. from rubber tyres) can lead to irreversible discoloration in the surface. Please contact our Technical Services Department for further advice.

Environmental considerations

Recycled materials are used wherever possible. The finished system is assessed as non-hazardous to health and the environment. The long service life and seamless surface reduce the need for repairs, maintenance and cleaning. Environmental and health considerations are controlled during manufacture and application of the products by Flowcrete staff and fully trained and experienced contractors.

Technical Information

The figures that follow are typical properties achieved in laboratory tests at 20 °C and at 50% Relative Humidity.

Reaction to fire	B _{FL} -s1	EN 13501-1
Wear Resistance	Max. wear depth < 50 µm	EN 13892-4
Bond Strength	> 2.0 N/mm ²	EN 13892-8
Impact Resistance	4 Nm	EN ISO 6272
Compressive Strength	> 55 N/mm ²	EN 13892-2
Flexural Strength	> 20 N/mm ²	EN 13892-2
Tensile Strength	> 10 N/mm ²	BS 6319-7
Temperature Resistance	Tolerant of sustained temperatures up to 60 °C	

Water Permeability Nil - Karsten test (impermeable)

Chemical Resistance Consult Technical Dept.

Slip Resistance Dry >40 low slip potential
Method described in BS 7976-2 (in accordance with HSE and UKSRG guidelines)
(typical values for 4-S rubber slider)

The slipperiness of flooring materials can change significantly, due to the installation process, after short periods of use, due to inappropriate maintenance, longer-term wear and/ or surface contaminants (wet or dry).

Textured systems are recommended to meet slip resistance value requirements for wet conditions and/ or surface contaminants (wet or dry) - please contact our Technical Advisors for further details and specifications.

Complies with BS 8204-6/FeRFA type 8.

Speed of Cure

	10 °C	20 °C	30 °C
Light traffic	24 hrs	16 hrs	10 hrs
Full traffic	72 hrs	48 hrs	36 hrs
Full chemical cure	12 days	7 days	7 days

Aftercare - Cleaning and Maintenance

Clean regularly using a single or double headed rotary scrubber drier in conjunction with a neutral detergent /floor maintainer and dry burnish. Maintain the surface appearance with a suitable high solids metalized floor polish as required (dependant on levels of traffic). Please contact our Technical Advisors for further details and cleaning documents.

Important Notes

Flowcrete's products are guaranteed against defective materials and manufacture and are sold subject to its standard Terms and Conditions of Sale, copies of which can be obtained on request.

Any suggested practices or installation specifications for the composite floor or wall system (as opposed to individual product performance specifications) included in this communication (or any other) from Flowcrete UK Ltd constitute potential options only and do not constitute nor replace professional advice in such regard. Flowcrete UK Ltd recommends any customer seek independent advice from a qualified consultant prior to reaching any decision on design, installation or otherwise.