

CONTACT  
THE FLOORING  
EXPERTS



## FLOOR MAINTENANCE

A GUIDE TO CLEANING &  
MAINTAINING FLOWCRETE  
FLOORING MATERIALS



# Introduction to Flowcrete Flooring Maintenance

---

Floors receive more abuse than walls or any other part of a building area. Floors are subjected not only to foot traffic but can also be exposed to heavy loads impacting them. It is safe to say that floors bare the brunt of the most wear and tear throughout a building.

Dirt itself is an abrasive material and as such the floor is abraded and scratched. If abrasive dirt and other spilled items are not removed they soon become ground into the surface leaving an unpleasant appearance.

All flooring materials require some maintenance and care, and the process undertaken will depend on the flooring system itself, the traffic and the type of dirt and debris to which it is exposed.

Flowcrete floors are formulated and manufactured with the best possible raw materials to ensure a long and useful life. They are easily maintained because of their physical and chemical toughness. If you maintain your Flowcrete floors correctly it will last for years.

Your maintenance program will depend on the size of your facility as well as the resources and the equipment you have dedicated to cleaning your floor. Those factors may fluctuate from time to time and as such the following guidelines are provided as a step towards the development of your cleaning program.

---

## Why is Proper Floor Maintenance Important?

### Safety

Clean floors reduce the risk of an accident or injury caused by a slip.

### Hygiene

Many industries including the pharmaceutical, cosmetic and food industries, have to maintain hygienic surfaces. A proper cleaning regime will result in clean floors that reduces the possibility of bacterial growth.

### Appearance

A clean floor is aesthetically pleasing and creates a positive impression to an environment.

### Durability

A clean well maintained floor will last longer. Dust and dirt are abrasive and will leave your floor scratched and unsightly.

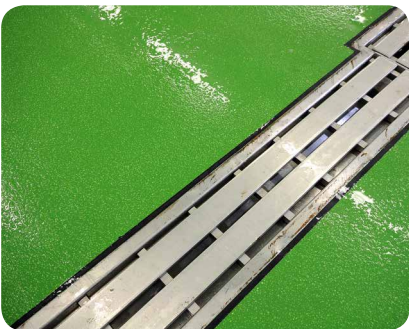




## Prevention: The Best Cure

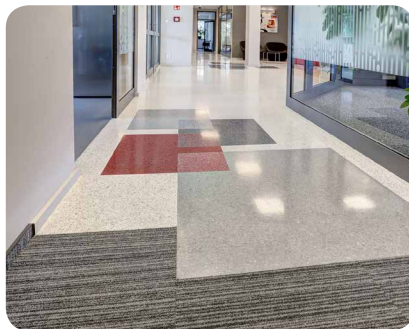
Preventing floors from getting soiled in the first place has a direct bearing on the cost and frequency of service required to maintain the desired appearance and cleanliness.

### Drip Trays



Supplying drip trays to prevent spills from being in direct contact to the flooring system. Not only is this a responsibility as far as health and safety is concerned it will also help you to keep your floor in good condition.

### Entrance Matting



Entrance matting is designed to stop dirt at the door and keep your floors clean.

### Rubber Mats



Unless a flooring system was selected to specifically provide impact resistance, applying rubber mats in areas subjected to impact will reduce costly repairs.

# Cleaning Process

The best method for cleaning Flowcrete floors is to have a five step process. This process varies between small and large floors and between textured and smooth floors.



**1 Sweep**  
Always sweep the floor before proper cleaning.



**2 Apply**  
Apply the cleaning product to the floor.



**3 Agitate**  
Agitate the cleaning product to release agents.



**4 Soak**  
Allow time for the cleaning product to sit on the floor.



**5 Remove**  
Remove the cleaning product from the floor.

## Area Size & Floor Texture Considerations

	SMOOTH FLOORING		TEXTURED FLOORING	
	Small Area	Large Area	Small Area	Large Area
<b>1 Sweep</b>	Broom or dust mop	Floor sweeper	Broom	Floor sweeper
<b>2 Apply</b>	Synthetic mop	Floor scrubber	Deck brush	Floor scrubber
<b>3 Agitate</b>	Mop or deck brush	Floor scrubber	Deck brush	Floor scrubber
<b>4 Soak</b>	5–10 min	5–10 min	5–10 min	5–10 min
<b>5 Remove</b>	Mop or wet vacuum	Wet vacuum	Wet vacuum	Wet vacuum

# Cleaning Flowcrete Flooring Materials

Some of Flowcrete flooring materials will need to be treated differently, so we've outlined the schedule for some of our most popular systems below.

## Maintenance Regime for Flowcrete's Most Popular Systems

PRODUCT	TYPICAL CLEANING	SWEEP	SPOT MOP	DRY BUFF	SPRAY BUFF	SCRUB & WET VAC	APPLY POLISH	STRIP & SEAL
Flowseal EPW	Wash & Vacuum Dry	Daily	Daily		3 Weekly	Monthly	Monthly	6 Monthly
Flowcoat SF41	Wash & Vacuum Dry	Daily	Daily		3 Weekly	Monthly	Monthly	6 Monthly
Peran SL	Wash & Vacuum Dry	Daily	Daily		3 Weekly	Monthly	Monthly	6 Monthly
Flowshield SL	Wash & Vacuum Dry	Daily	Daily		3 Weekly	Monthly	Monthly	6 Monthly
Flowfresh HF	Scrub / Dryer / HP Wash	Daily	Daily					
Flowfresh SL	Wash & Vacuum Dry	Daily	Daily		3 Weekly	Monthly	Monthly	6 Monthly
Flowfresh MF	Wash & Vacuum Dry	Daily	Daily		3 Weekly	Monthly	Monthly	6 Monthly
Flowfresh RT	Scrub / Dryer / HP Wash	Daily	Daily					
Peran STB	Wash & Vacuum Dry	Daily	Daily	2 Monthly	3 Weekly	Monthly	Monthly	6 Monthly
Flowfast Quartz	Wash & Vacuum Dry	Daily	Daily	2 Monthly	3 Weekly	Monthly	Monthly	6 Monthly
Peran ESD SL	Wash & Vacuum Dry	Daily	Daily					
Rustik	Scrubber / Dryer	Daily	Daily			Monthly		

## Flowcrete Cleaning Agents

Flowcrete offers a range of cleaning agents ideally suited to the upkeep and maintenance of epoxy, polyurethane and terrazzo flooring systems.

### Flowcrete Cleaning Products

PRODUCT	DESCRIPTION	USE
<b>Flowcrete Polish &amp; Wax Remover</b>	A fast and effective polish remover that returns the surface to its original state.	For all the commercial applications.
<b>Flowcrete Special Cleaner</b>	A highly-concentrated cleaning agent (maintainer) for micro-protection of floor surfaces.	General purpose hard surface daily cleaner.
<b>Flowcrete Spot Remover</b>	Designed for the removal of rubber streaks and rubber residues caused by hand and forklifts on industrial floors.	For industrial applications, including heavily soiled industrial areas and warehouses.
<b>Flowcrete Grasset</b>	An alkaline, fast acting detergent designed for the removal of oil, grease and albumen deposits of animal and vegetable origin.	Walls and work surfaces in food processing areas e.g. canteens, butcher shops, slaughter houses, dairies, cheese dairies, bakeries, hospitals, hotels etc.

### Flowcrete Maintenance Dressing

PRODUCT	DESCRIPTION	USE
<b>Flowcrete Satina</b>	A polish that provides a durable, protective, matt surface finish.	For all the commercial applications.